

Sobha Realty delivers 1st phase of Hartland Greens apartments in MBR city



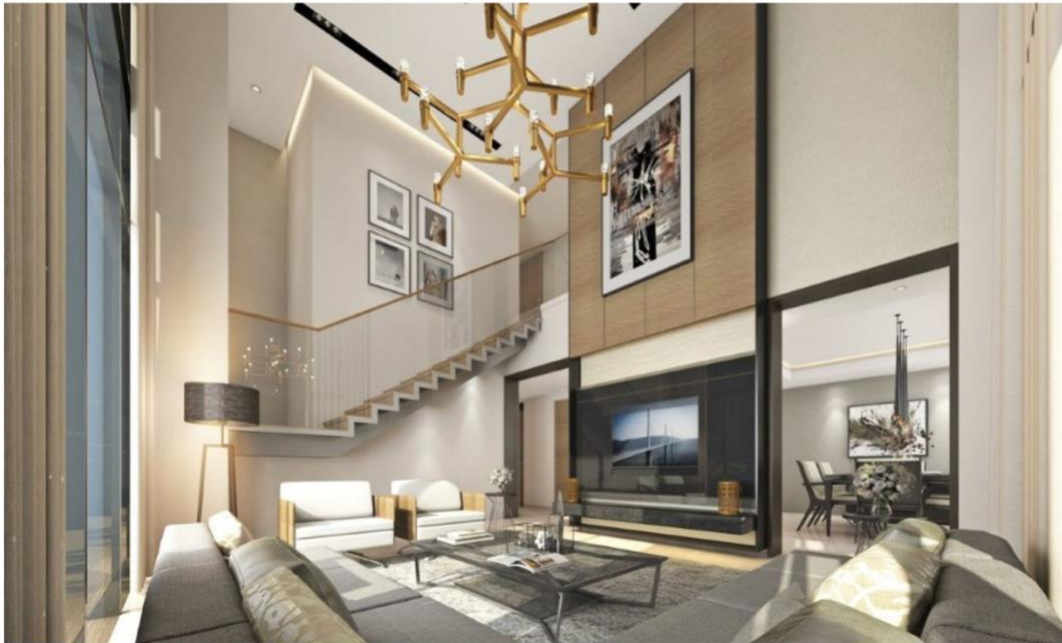
The project's first phase comprises 167 units

📅 13 February 2019 06:27 PM

📅 13 February 2019 06:27 PM

Dubai – Mubasher: Sobha Realty announced the beginning of delivering the first phase of Hartland Greens apartments, located in its Sobha Hartland development in Mohammed Bin Rashid Al Maktoum (MBR) city.

Hartland Greens, which comprises six mid-rise buildings, includes studios, one, two and three-bedroom apartments to four-bedroom duplexes, all located amid vast open spaces, the premium real estate developer said.



The project's first phase comprises 167 units, only 117 units have been already handed over, according to the company's recent statement.



"The timely handover of buildings one and four in Hartland Greens reinforces our customer-centric approach and our commitment to always achieving the best standards," Sobha Realty's chief marketing officer Tirthankar Ganguly said.



The luxury real estate developer said it is to finish phase one of Hartland Estate Villas, with the handover starting shortly.

The investment cost of the project wasn't disclosed.

It is worth noting that Sobha Hartland is an 8 million square feet waterfront community perched along the Dubai Canal.